



Fence-Lok System

Specification Sheet

TFS102000

20/02/25

safesite[®]
F A C I L I T I E S



Fence-Lok System

Providing a full and cost-effective solution for temporary fencing at your site, including surveys, engineering, installation, and aftercare, all covered in one price.

It leverages ground screw technology for system and fence anchoring, replacing traditional bulky kentledge and ballast solutions. With multiple systems available for temporary Heras fencing, V-mesh, and solid steel hoarding panels, it also accommodates features such as debris netting, signage, and acoustic barriers.

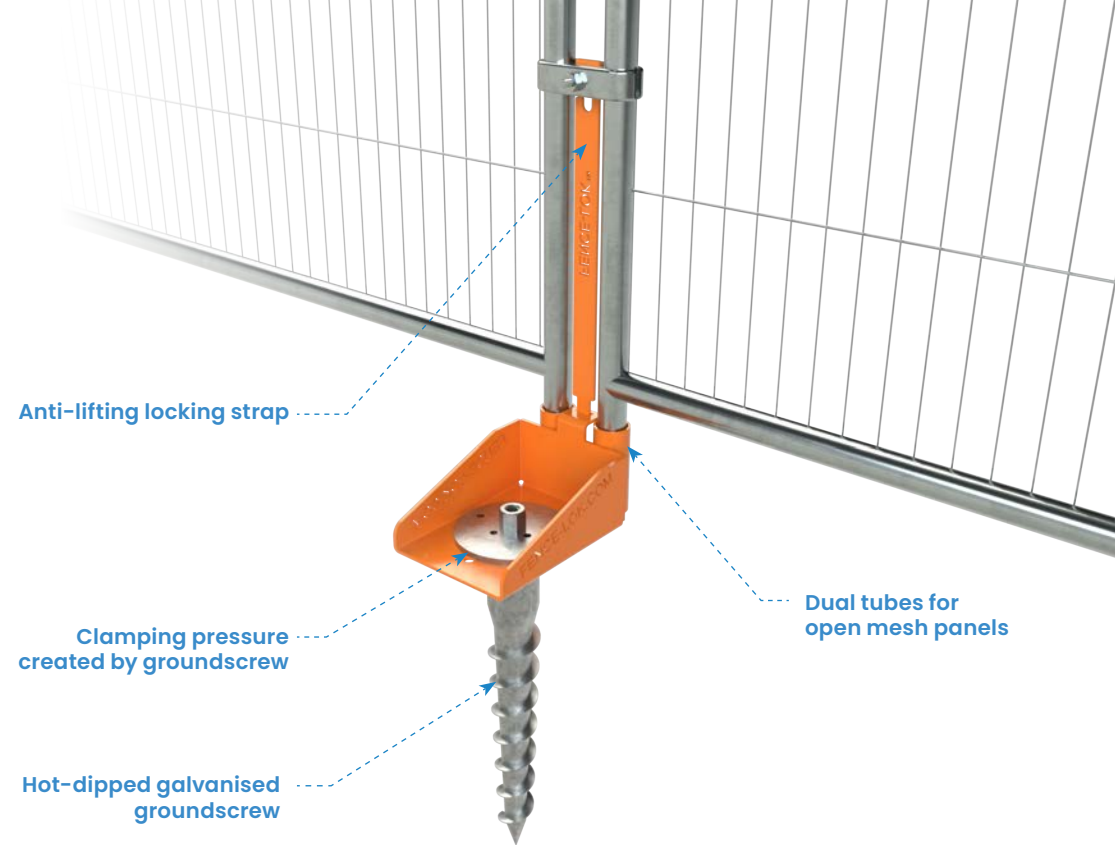
Fence-Lok offers a comprehensive turnkey solution, providing support at every stage of your project. We offer free technical assistance, including site-specific temporary works designs, site load tests, and design and check certification, on-site education and support, and ground penetration radar surveys.



Quick installation



Stabiliser for added strength



Key Features

- ▶ Full technical support for the duration of the project, which includes site-specific designs, certified pull-out testing, and ground analysis
- ▶ Temporary works compliant: Ensures safety, security, and robustness of site fencing.
- ▶ Reusable design can be used on multiple sites and over several years.
- ▶ Lightweight to prevent lifting related injuries.
- ▶ Zero trip on public side and locked to the ground to prevent lifting and access
- ▶ Rapid installation to reduce labour costs.
- ▶ Easy to learn — Can be installed by trained individuals at no cost.
- ▶ Can be used with signage and branding



Fence-Lok Hoarding System

Providing a full and cost-effective solution for temporary fencing at your site, including surveys, engineering, installation, and aftercare, all covered in one price.

It leverages ground screw technology for system and hoarding anchoring, replacing traditional bulky kentledge and ballast solutions.

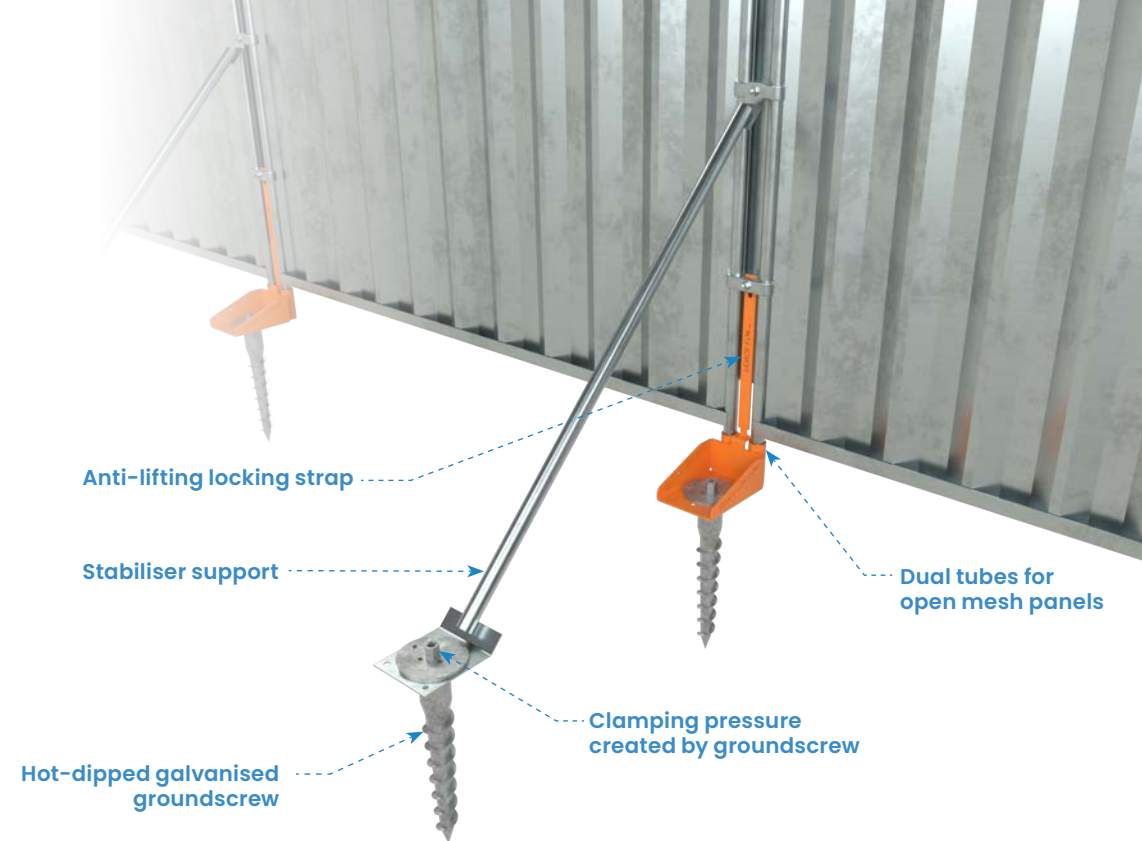
Fence-Lok offers a comprehensive turnkey solution, providing support at every stage of your project. We offer free technical assistance, including site-specific temporary works designs, site load tests, and design and check certification, on-site education and support, and ground penetration radar surveys.



Quick installation



Stabiliser for added strength



Key Features

- ▶ Full technical support for the duration of the project, which includes site-specific designs, certified pull-out testing, and ground analysis
- ▶ Temporary works compliant: Ensures safety, security, and robustness of site fencing.
- ▶ Reusable design can be used on multiple sites and over several years.
- ▶ Lightweight to prevent lifting related injuries.
- ▶ Zero trip on public side and locked to the ground to prevent lifting and access
- ▶ Rapid installation to reduce labour costs.
- ▶ Easy to learn — Can be installed by trained individuals at no cost.
- ▶ Can be used with signage and branding



Customer journey

1 Site Visit, Measure Perimeter and Load Test

- Free site survey to measure perimeter.
- Free on-site soil, concrete, and asphalt load testing.
- Temporary Works designs that comply with BS5975 for any site.

2 Temporary Work Design & Check

- Full Design Works & Check Certificate with calculation.
- Design wind load calculation.
- Preliminary Temporary works calculation based on soil load test.
- Can be used with signage and branding

3 Supply Specified System

- Nationwide delivery and installation services.
- Different fixing options. System can be installed on soil, grass, concrete, or asphalt surfaces.

5 Removal & Transfer To Next Site

- As simple to uninstall as it is to set up.
- Constructed from robust, rust-resistant metal materials.
- Relocate and reuse multiple times.

4 Full Installation & Optional GPR Survey

- The System's Ground Screws can quickly be installed using a readily available petrol-driven or battery impact driver.
- Free On-site training and support.
- Cat scan as standard. GPR available if required.



Free on-site load testing



Free On-site training and support

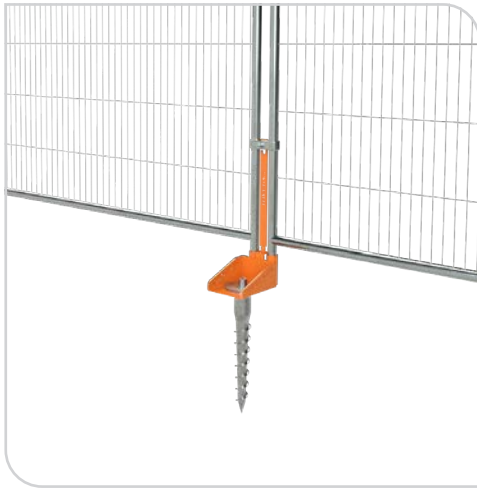


Petrol-driven & battery impact drivers



Available Sets

Set A — Open Mesh System



Component Parts	Qty
TFSI02000 Open Mesh Bracket	1
TFSI02005 Open Mesh Locking Strap	1
Couplers	2

Fixing Options	Qty
TFSI02015 Soil Fixing – Ground Screw	1
TFSI02020 Concrete Fixing Screw	2
TFSI02025 Asphalt anchor fixings	2

Set B — Open Mesh with Stabilising Brace System



Component Parts	Qty
TFSI02000 Open Mesh Bracket	1
TFSI02005 Open Mesh Locking Strap	1
TFSI02070 Stabilising Brace	1
Couplers	3

Fixing Options	Qty
TFSI02030 Soil Fixing – Ground Screw	2
TFSI02035 Concrete Fixing Screw	4
TFSI02040 Asphalt anchor fixings	4

Set C — V-Mesh System



Component Parts	Qty
TFSI02045 V-Mesh Bracket	1
TFSI02050 V-Mesh 'U' Bracket	1
TFSI02070 Stabilising Brace	1

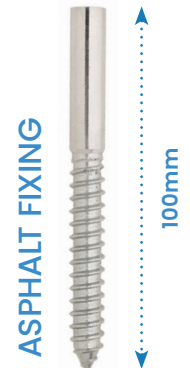
Fixing Options	Qty
TFSI02055 Soil Fixing – Ground Screw	2
TFSI02060 Concrete Fixing Screw	4
TFSI02065 Asphalt anchor fixings	4



Hot-Dipped Galvanised Ground Screw with a case-hardened drive nut.



high performance concrete screw for absolute installation ease and external applications.



Chemical resin anchor bolt with an internal thread is designed for removable fixings in asphalt.



Available Sets

Set D — Hoarding System



Component Parts	Qty
TFS102000 Open Mesh Bracket	1
TFS102005 Open Mesh Locking Strap	1
TFS102070 Stabilising Brace	1
Couplers	3

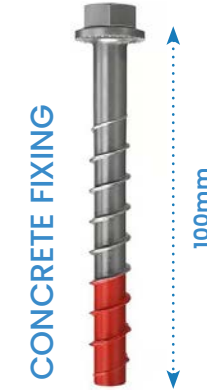
Fixing Options	Qty
TFS102075 Soil Fixing – Ground Screw	2
TFS102080 Concrete Fixing Screw	4
TFS102085 Asphalt anchor fixings	4



Fixing Components



Hot-Dipped Galvanised Ground Screw with a case-hardened drive nut.



high performance concrete screw for absolute installation ease and external applications.



Chemical resin anchor bolt with an internal thread is designed for removable fixings in asphalt.



Petrol-driven & battery impact drivers



Fence-Lok Componets

1 **Open Mesh Bracket**
TFSI02000



Size (mm)	Weight (kg)
H125 x W180 x D280	4.5

2 **Open Mesh Locking Strap**
TFSI02005



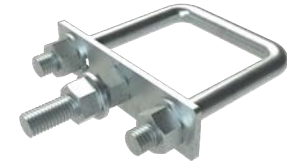
Size (mm)	Weight (kg)
H460 x W35 x D5	0.5

3 **V-Mesh Bracket**
TFSI02045



Size (mm)	Weight (kg)
H135 x W180 x D310	4.5

4 **V-Mesh 'U' Bracket**
TFSI02050



Size (mm)	Weight (kg)
H110 x W130 x D40	1

5 **Stabilising Brace**
TFSI02070



Size (mm)	Weight (kg)
H1520 x W160 x D120	5

6 **Flanged Ground Screw**
TFSI02075



Size (mm)	Weight (kg)
H500 x W150 x D68	3

7 **Concrete Screw**
TFSI02080



Size (mm)	Weight (kg)
H100 x W12	0.1

8 **Asphalt Anchor**
TFSI02085



Size (mm)	Weight (kg)
H100 x W12	0.1